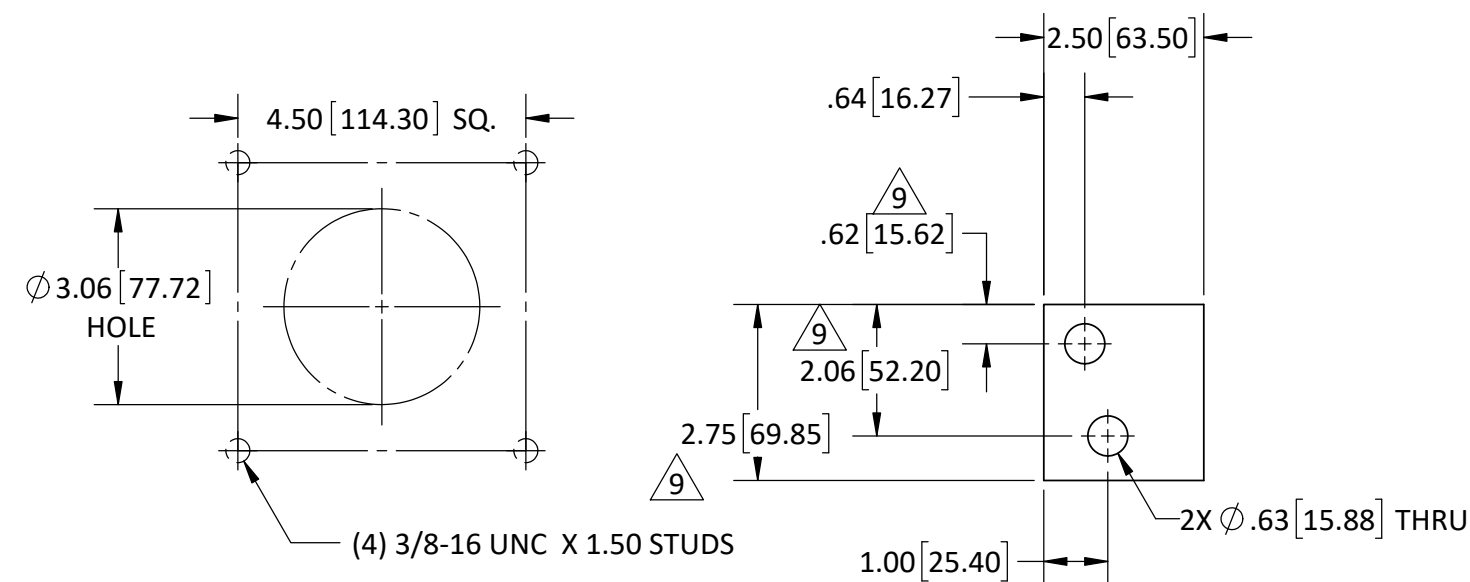
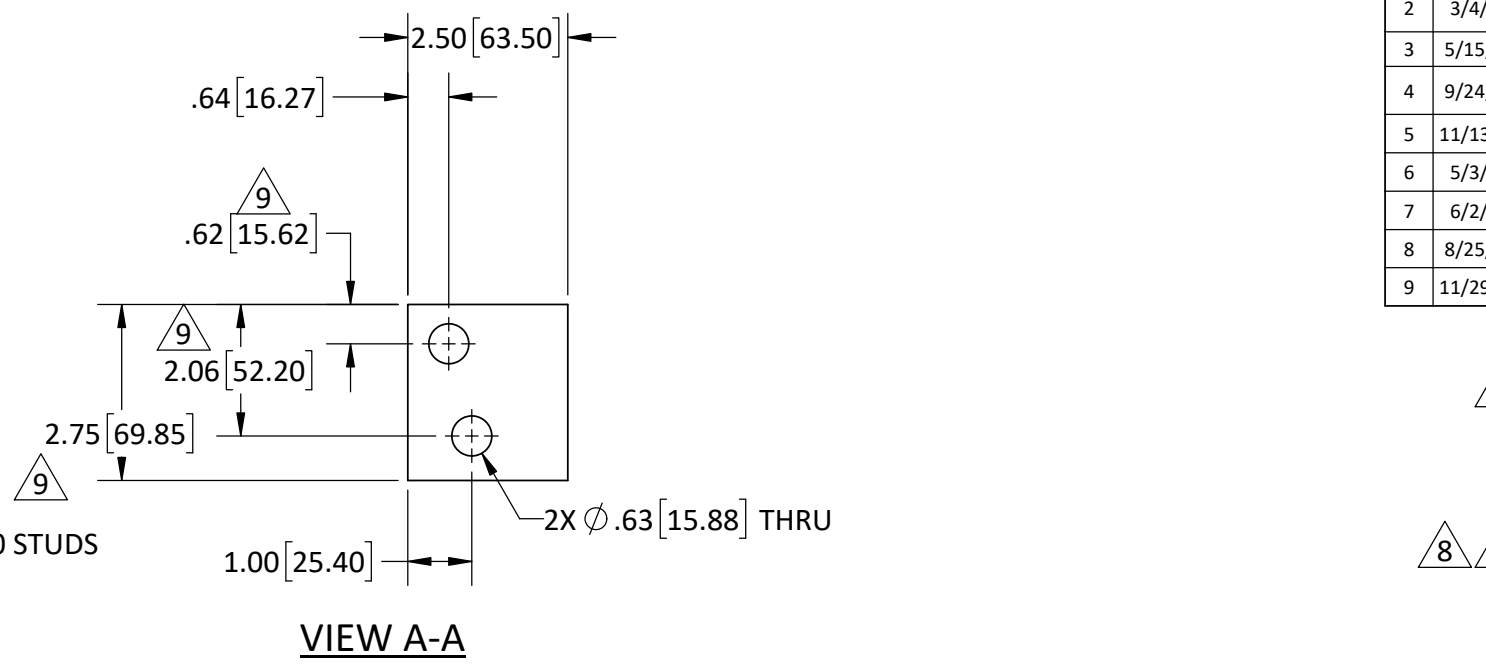
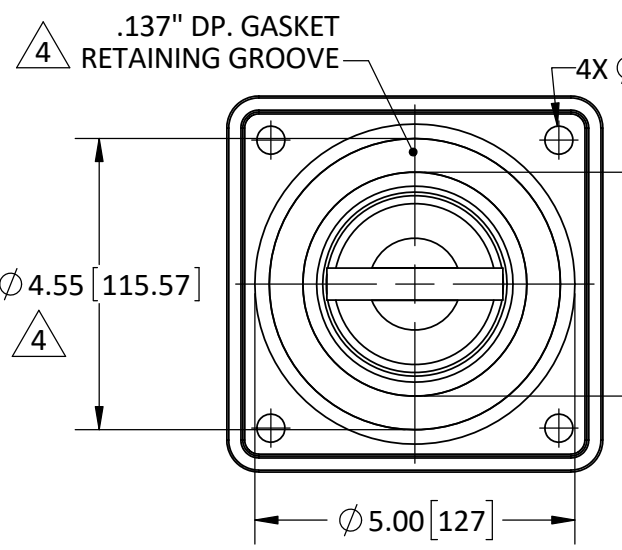


REVISIONS					
REV.	DATE	ECN#	DESCRIPTION	BY	APPROVED
1	6/4/2004		ADDED TAPPED HOLES TO 6-HOLE SPADE	DB	RM
2	3/4/2009	HJ09-039	TOLERANCE ON OIL SIDE WAS +/- .030", UPDATED DRAWING TEMPLATED TO HJI.	JH	DB
3	5/15/2018	HJ18-102	REMOVED CUSTOMER REF	TJF	BLB
4	9/24/2020	HJ20-224	GASKET GROOVE WAS 3/16" DEEP X Ø3.75" ID X Ø4.50" OD, UPDATED TEMP. & GASKET/CLAMP P/N	CLS	JDD
5	11/13/2020	PQI I0028329	ADDED E07 AND E12 NOTES, AND GASKET	CJT	MAD
6	5/3/2021	HJ21-086	ADDED APPROX. WEIGHT & MINIMUM CREEP	CLS	JDD
7	6/2/2021	HJ21-110	CHANGED RATING FROM 1.2KV TO 2.5KV	BLG	LO
8	8/25/2021	PQI31700	REVISED MATERIAL NOTE 6 TO INCLUDE .25" THICK GASKET.	CJT	LO
9	11/29/2022	HJ22-196	2.75" WAS 2.7"; 2.06" WAS 2.03"; .62" WAS .59"	MAD	CJT

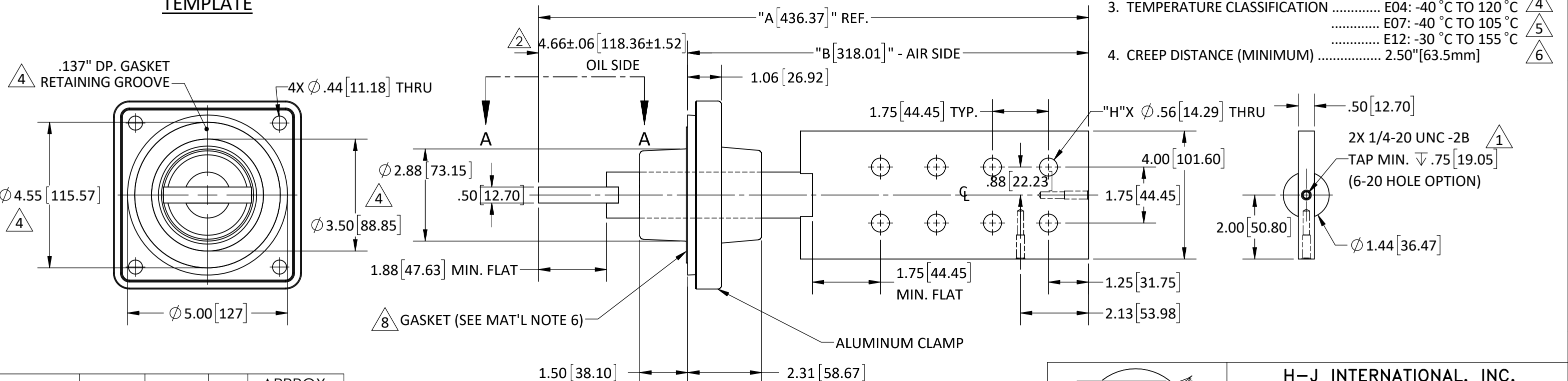


RECOMMENDED MTG. TEMPLATE



- MATERIAL:**
- 5 E04 - INDOOR EPOXY SYSTEM, GREY
 - E07 - CYCLOALIPHATIC, GREY (UV EXPOSED)
 - E12 - INDOOR EPOXY SYSTEM, BLACK
 - 4 HD ETP C11000 COPPER (CONDUCTOR), TIN PLATED
 - 5 356.1 CAST ALUMINUM (CLAMP)
 - 8 5 GASKET (BUNA N) - FOR E04 & E07, (VITON) - FOR E12. BUSHING PART #'S ENDING IN SUFFIX -04 USE .25" THICK GASKET.

- SPECIFICATIONS:**
1. BASIC IMPULSE LEVEL 45kV
 2. CONTINUOUS CURRENT RATING 3300A
 3. TEMPERATURE CLASSIFICATION E04: -40 °C TO 120 °C 4
..... E07: -40 °C TO 105 °C 5
..... E12: -30 °C TO 155 °C 6
 4. CREEP DISTANCE (MINIMUM) 2.50" [63.5mm]



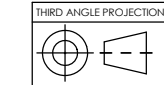
PART NO.	DIM "A"	DIM "B"	"H"	APPROX. WEIGHT (LB)
10-510-100	13.68	9.02	4	10.17
10-510-101	15.43	10.77	6	11.18
10-510-102	17.18	12.52	8	12.23
10-510-103	18.93	14.27	10	13.27
10-510-104	20.68	16.02	12	14.32
10-510-105	22.43	17.77	14	15.36
10-510-106	24.18	19.52	16	16.41
10-510-107	25.93	21.27	18	17.45
10-510-108	27.68	23.02	20	18.50

- NOTES:**
1. ALL UNSPECIFIED RADII TO BE R0.125
 2. ALL CONTACT SURFACES TO BE CLEAN & FREE FROM FLASH.
 3. RATINGS BASED ON SIDE MOUNTED BUSHINGS WITH OIL IMMERSSED SHANK AND SUITABLE TERMINATION AND LEAD CONNECTIONS.

PROPRIETARY AND CONFIDENTIAL

THE INFORMATION CONTAINED IN THIS DRAWING IS THE SOLE PROPERTY OF H-J INTERNATIONAL, INC. ANY REPRODUCTION IN PART OR AS A WHOLE WITHOUT THE WRITTEN PERMISSION OF H-J INTERNATIONAL, INC. IS STRICTLY PROHIBITED.

BREAK ALL SHARPS UNLESS OTHERWISE NOTED



TOLERANCES (EXCEPT AS NOTED)

ONE PLACE MM	±0.50
TWO PLACE MM	±0.25
TWO PLACE DEC.	±0.20
THREE PLACE DEC.	±0.10
FRACTIONS	± 1/16"
ANGLES	1°



APPROVED BY	DB	DATE	9/15/2003
CHECKED BY	RM	DATE	9/15/2003
DRAWN BY	DB	DATE	9/15/2003
TOOL NO.	T10-510-1		
PRODUCT GRP.	1000 SERIES		

H-J INTERNATIONAL, INC.
3010 HIGH RIDGE BLVD. HIGH RIDGE, MO. 63049 USA
PHONE 1-636-677-3421 FAX 1-636-376-1915

2.5kV / 3300A
SECONDARY BUSHING
(COPPER CONDUCTOR)

DRAWING NO. **10-510-100**

SCALE 1:3 SIZE B REV. 9 SHEET 1 OF 1